



股票代码:002881

全球领先的物联网终端及无线数据方案提供商

204

4 4

未



未

未

未

件

件

件

未

件

件

件

件

件

件

件

件

未

件

未

SLM759 **MEIGLink**

SLM759LC-XXXX

TD-LTE/FDD-LTE/TD-SCDMA/WCDMA/
EVDO/CDMA/GSM+GPS

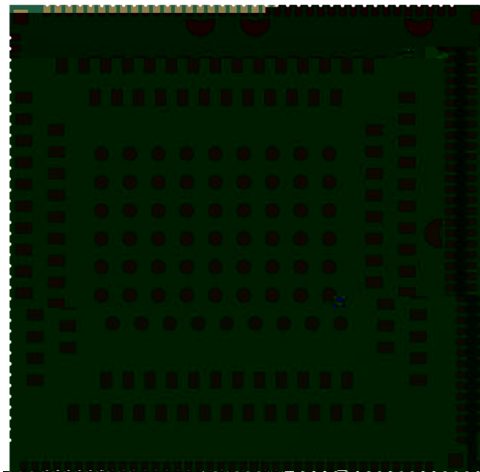
IMEI: 869635010017161
MEID: 869635010017161
SN: M759C12BJ6041500093



IMEI MEID SN

MeiG Smart Technology Co., LTD Made in China



SLM759 600 MSM8953 CPU 14nm FinFET
64bit ARM 8 Cortex A-53 1.8Ghz/2.0Ghz
Decode/encode 4K 30fps H.265 16GB/32GB/64GB
LTE

TD-LTE/FDD-LTE/WCDMA/EVDO/TD-SCDMA/CDMA/GSM

SLM759 Android7.1

TD-LTE: 117/30Mbps

FDD-LTE: 150Mbps/50Mbps

WCDMA DC HSPA+: 42Mbps/5.76Mbps

EVDO EVDO RevA: 3.1Mbps/1.8Mbps

TD-SCDMA HSPA: 4.2Mbps/2.2Mbps

CDMA1x: 153.6kbps/153.6kbps

GSM EDGE: 236.8kbps/236.8kbps

SLM759

2.4G/5G WiFi

BT GPS 1300W 3D
POS VR Camera

		* * *
		Qualcomm SDM450& MSM8953
CPU		Octa-core A53 (64bit) 8*1.8GHz SLM759L *Octa-core A53 (64bit) 8*2.0GHz SLM759N
GPU		Adreno506; 650MHz
		16GB eMMC + 2GB LPDDR3 933Mhz * 32GB+4GB memory
		Android 7.1
		43.0x44.0x2.85mm LCC + LGA 323pin
		-30~75° C
		-40~85° C
		TDD-LTE: B38/39/40/41 FDD-LTE: B1/3/5/8 TD-SCDMA: B34/39 WCDMA: B1/5/8 EVDO: BC0 CDMA: BC0 GSM: B5/3/8
Wi-Fi		IEEE 802.11 a/b/g/n 2.4G&5G * 11ac * 5G FEM
Bluetooth		BT4.1
GNSS		GPS/Beidou/Glonass/Galileo
	TD-LTE	Cat4 TD-LTE 117/30Mbps
	FDD-LTE	Cat4 FDD-LTE 150/50Mbps
	DC-HSPA+	42/11.2Mbps
	TD-HSPA	2.8/2.3Mbps
	EVDO Rev.A	3.1/1.8Mbps
	EDGE	Class12, 236.8kbps/236.8kbps
	GPRS	Class12, 85.6kbps/85.6kbps
SIM		DSDS 3.0/1.8V SIM LW/G/T+G

	LW/G/T+W LW/G/T+1X L/EVDO/CDMA1X+G CDMA
Display	Matrix: FULL HD: 1920*1200 60fps;
	LCM Size: User defined
	Interface: 1st LCM MIPI DSI 4-lane; 2nd LCM MIPI DSI 4-lane
Camera	Interface: CSI 4-Lane
	Pixel: 13-24Mp/ up to 13Mp ISP 13MP Camera
	Video decode 4K 30fps SLM759L , 1080p 60fps, H.264/H.265 MP4/ WMV9/ VC1/ DivX/ VP8/VP9
	Video encode 4K 30fps SLM759L ,1080p 60 fps: H.264/ H.265/ MP4/ VP8 1080P 60fps De +1080p 30fps En SLM759L
	home + - TP
Reset	
	VBAT 3pin 3.4V 4.2V 3.8V
	SDIO *1 SD3.0; eMMC v5.1
	USB2.0/3.0 OTG USB_BOOT USB
	BLSP ports 8 ports(BLSP1-8), 4-bits each, multiplexed serial interface functions
	UART*4 BLSP2,BLSP4-6 support UART up to 4 Mbps
	I2C All BLSPs support I2C and SPI, These BLSPs use
	SPI(master only) bits [1:0] for I2C
	GPIO SPI is only support via BLSP
	ADC*2
	* Qcharger 3.0
	GPIO 50 GPIO, BLSP GPIO
	VCOIN
	PIN LTE LTE GPS 2.4G WiFi- 5G WiFi-

	Audio	1 1 1 1 1	MIC MIC 0.8W D
--	-------	-----------------------	----------------------

SLM759-E	TDD-LTE: B38/40/41 FDD-LTE: B1/3/5/7/8/20/28A WCDMA: B1/2/5/8 GSM: B2/3/5/8
SLM759-A	FDD-LTE B2/4/5/7/12/13/17/25/26 TDD-LTE B41 WCDMA B1/2/4/5 GSM B2/5
SLM759-J	FDD-LTE B1/3/8/19/26 TDD-LTE B41 WCDMA B1/6/8/19
SLM759-AU	FDD-LTE: B1/3/5/7/8/28 TDD-LTE: B40 WCDMA: B1/2/5/8 GSM: B2/3/5/8
SLM759-LA	FDD-LTE B2/4/5/7/8/28 TDD-LTE B40 WCDMA B2/5/8 GSM B2/5/8
WIFI-Only SNM759	WIFI 802.11a/b/g/n/ac* BT4.2

PIN#	SLM759 PIN Name	Pad characteristics	Functional description
PIN1	VDD_RF	PO	Power for RF in SLM759 module
PIN2	VDD_RF	PO	Power for RF in SLM759 module
PIN3	GND	GND	GND
PIN4	GND	GND	GND

PIN33	USB_DM	AI,AO	USB data minus
PIN34	GND	GND	GND
PIN35	GND	GND	GND
PIN36	VBAT_SNS	AI	battery voltage input to ADC
PIN37	VBAT	PI,PO	Battery,3.5V-4.2V,default 3.8V
PIN38	VBAT	PI,PO	Battery,3.5V-4.2V,default 3.8V
PIN39	KYPD_PWR_N1	DI	KEY POWER ON/OFF
PIN40	GND	GND	GND
PIN41	VBUS	PI,PO	USB Voltage
PIN42	VBUS	PI,PO	USB Voltage
PIN43	GND	GND	GND
PIN44	MIC_IN1_P	AI	Microphone 1 input plus
PIN45	MIC_IN1_M	AI	Microphone 1 input minus
PIN46	MIC_IN2_P	AI	Microphone input 2
PIN47	GND	GND	GND
PIN48	CDC_HS_DET	AI	MBHC mechanical insertion/removal-detection
PIN49	CDC_HPH_L	AO	Headphone output, left channel
PIN50	CDC_HPH_REF	AI	Headphone ground reference
PIN51	CDC_HPH_R	AO	Headphone output, right channel
PIN52	CDC_EAR_M	AO	Earpiece output, minus
PIN53	CDC_EAR_P	AO	Earpiece output, plus
PIN54	SPKR_DRV_M	AO	Class-D speaker driver output, minus
PIN55	SPKR_DRV_P	AO	Class-D speaker driver output, plus
PIN56	GND	GND	GND
PIN57	FORCE_USB_BOOT	DI	Pull up with VREG_L5 to forced USB boot
PIN58	GPIO22_I2C6_SDA	B-PD:nppukp	Configurable I/O, I2C SDA
PIN59	GPIO23_I2C6_SCL	B-PD:nppukp	Configurable I/O, I2C SCL
PIN60	GPIO20_UART6_TX	B-PD:nppukp	Configurable I/O,UART6 TX
PIN61	GPIO21_UART6_RX	B-PD:nppukp	Configurable I/O,UART6 RX
PIN62	GND	GND	GND
PIN63	VREG_L11_2P95	PO	PMIC output 2.95V for SD-card power
PIN64	GPIO133_SDCARD_DET_N	B-PD:nppukp	Configurable I/O,SD card detection
PIN65	SDC2_SDCARD_D3	BH-NP:pdpukp	Secure digital controller 2 data bit 3
PIN66	SDC2_SDCARD_D2	BH-NP:pdpukp	Secure digital controller 2 data bit 2
PIN67	SDC2_SDCARD_D1	BH-NP:pdpukp	Secure digital controller 2 data bit 1
PIN68	SDC2_SDCARD_D0	BH-NP:pdpukp	Secure digital controller 2 data bit 0
PIN69	SDC2_SDCARD_CMD	BH-NP:pdpukp	Secure digital controller 2 command
PIN70	SDC2_SDCARD_CLK	BH-NP:pdpukp	Secure digital controller 2 clock
PIN71	GPIO130_SCAM_PWD_N	B-PD:nppukp	Configurable I/O, front CAM PWDN
PIN72	GPIO129_SCAM_RST_N	B-PD:nppukp	Configurable I/O, front CAM RESET
PIN73	GPIO39_MCAM_PWD_N	B-PD:nppukp	Configurable I/O, main CAM PWDN

PIN74	GPIO40_MCAM_RST_N	B-PD:nppukp	Configurable I/O, main CAM RESET
PIN75	CAM_I2C_SCL0	B-PD:nppukp	Configurable I/O, Dedicated camera I2C0 SCL
PIN76			

PIN114	GPIO25_LCD_TE1	B-PD:nppukp	Configurable I/O, secondary LCD TE
PIN115	MIPI_DSI0_CLK_P	AO	MIPI display serial interface 0 clock+
PIN116	MIPI_DSI0_CLK_N	AO	

PIN155	Reserved		Reserved
PIN156	Reserved		Reserved
PIN157	CHG_LED	AO	Current sink for charging indication
PIN158	PMI8952_MPP2	AO-Z,AI,DO	Configurable MPP,PWM,ADC
PIN159	GND	GND	GND
PIN160	PMI_HAP_OUT_N	AO	Haptics driver output negative
PIN161	PMI_HAP_OUT_P	AO	Haptics driver output positive
PIN162	FLASH_LED2+	AO	FLASH LED anode(1A)
PIN163	GND	GND	GND
PIN164	VREF_BAT_THERM	AI	Battery temperature input to ADC
PIN165	CS_PLUS	AI	Current sense resistor-plus side
PIN166	CS_MINUS	AI	Current sense resistor-minus side
PIN167	MIC_BIAS1	AO	Microphone bias #1
PIN168	GND_MIC	GND	Microphone bias filter ground
PIN169	MIC_IN3_P	AI	Microphone input 3
PIN170	GND	GND	GND
PIN171	USB3_SS_RX_P	AI	USB super-speed receive – plus
PIN172	USB3_SS_RX_M	AI	USB super-speed receive – minus
PIN173	GND	GND	GND
PIN174	USB3_SS_TX_P	AO	USB super-speed transmit – plus
PIN175	USB3_SS_TX_M	AO	USB super-speed transmit – minus
PIN176	GND	GND	GND
PIN177	GPIO98_I2C8_SDA	B-PD:nppukp	Configurable I/O, I2C SDA
PIN178	GPIO99_I2C8_SCL	B-PD:nppukp	Configurable I/O, I2C SCL
PIN179	VREG_L12_VDDPX2_SDC	PO	PMIC output 2.95V for SDC2 signal
PIN180	GPIO131_DCAM_RST_N	B-PD:nppukp	Configurable I/O, Depth camera reset
PIN181	GPIO132_DCAM_PWD_N	B-PD:nppukp	Configurable I/O, Depth camera pwn
PIN182	GND	GND	GND
PIN183	MIPI_CSI1_CLK_P	AI	MIPI camera serial interface 1 clock+
PIN184	MIPI_CSI1_CLK_N	AI	MIPI camera serial interface 1 clock-
PIN185	MIPI_CSI1_LANE0_P	AI	MIPI camera serial interface 1 lane0+
PIN186	MIPI_CSI1_LANE0_N	AI	MIPI camera serial interface 1 lane0-
PIN187	MIPI_CSI1_LANE1_P	AI	MIPI camera serial interface 1 lane1+
PIN188	MIPI_CSI1_LANE1_N	AI	MIPI camera serial interface 1 lane1-
PIN189	MIPI_CSI1_LANE2_P	AI	MIPI camera serial interface 1 lane2+
PIN190	MIPI_CSI1_LANE2_N	AI	MIPI camera serial interface 1 lane2-
PIN191	MIPI_CSI1_LANE3_P	AI	MIPI camera serial interface 1 lane3+
PIN192	MIPI_CSI1_LANE3_N	AI	MIPI camera serial interface 1 lane3-
PIN193	GND	GND	GND
PIN194	GPIO28_CAM_MCLK2	B-PD:nppukp	Configurable I/O, Depth camera MCLK
PIN195	GND	GND	GND
PIN196	CAM_I2C_SCL1	B-PD:nppukp	Configurable I/O, Dedicated camera I2C1

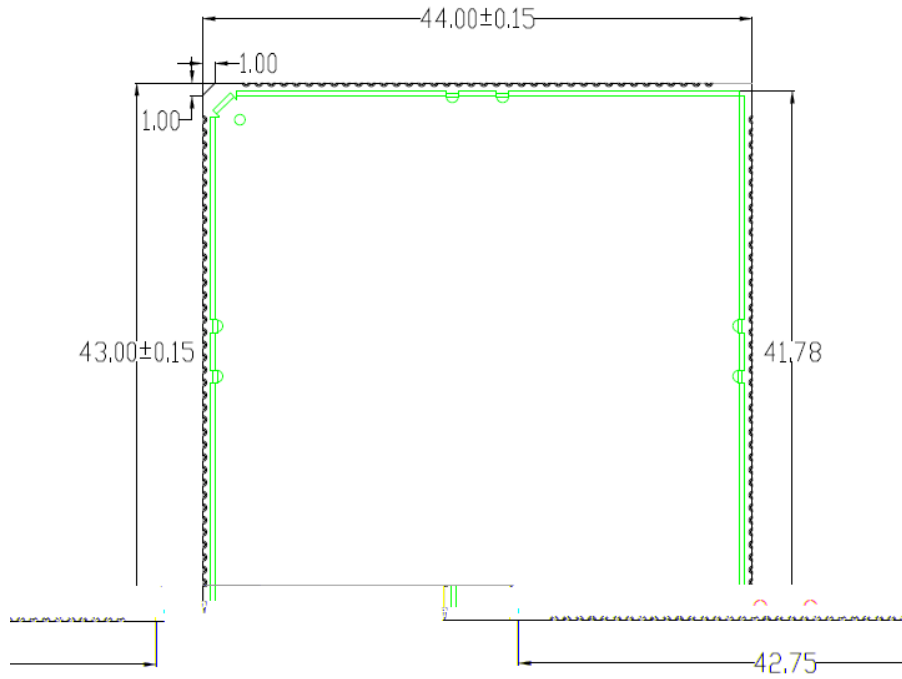


PIN233	S2B		connect to S2A
PIN234	GPIO66	B-PD:nppukp	Configurable I/O
PIN235	Reserved		Reserved
PIN236	GPIO128	B-PD:nppukp	Configurable I/O
PIN237	GPIO36	B-PD:nppukp	Configurable I/O
PIN238	GPIO33	B-PD:nppukp	Configurable I/O
PIN239	Reserved		Reserved
PIN240	Reserved		Reserved
PIN241	GRFC7_SEL	B-PD:nppukp	Configurable I/O,GRFC7_SEL
PIN242	GRFC5_SEL	B-PD:nppukp	Configurable I/O,GRFC7_SEL
PIN243	GND	GND	GND
PIN244	Reserved		Reserved
PIN245	GPIO19_NFC_I2C5_SCL	B-PD:nppukp	Configurable I/O,NFC I2C SCL
PIN246	GPIO18_NFC_I2C5_SDA	B-PD:nppukp	Configurable I/O, NFC I2C SDA
PIN247	GPIO1_SPI_MISO	B-PD:nppukp	Configurable I/O, SPI MISO
PIN248	GPIO0_SPI_MOSI	B-PD:nppukp	Configurable I/O, SPI MOSI
PIN249	GPIO137_FP_SPI_MOSI	B-PD:nppukp	Configurable I/O, fingerprint SPI MOSI
PIN250	GPIO135_FP_SPI_CLK	B-PD:nppukp	Configurable I/O, fingerprint SPI CLK
PIN251	GPIO138_FP_SPI_MISO	B-PD:nppukp	Configurable I/O, fingerprint SPI MISO
PIN252	GPIO42_ACCL_INT1	B-PD:nppukp	Configurable I/O,ACCL INT
PIN253	GPIO43_ALSP_INT_N	B-PD:nppukp	Configurable I/O,ALSP INT
PIN254	GPIO44_MAG_INT	B-PD:nppukp	Configurable I/O,MAG INT
PIN255	GPIO45_GYRO_INT	B-PD:nppukp	Configurable I/O,GYRO INT
PIN256	GPIO58_UIM2_DET	B-PD:nppukp	Configurable I/O,UIM2 removal detection
PIN257- PIN323	GND	GND	GND

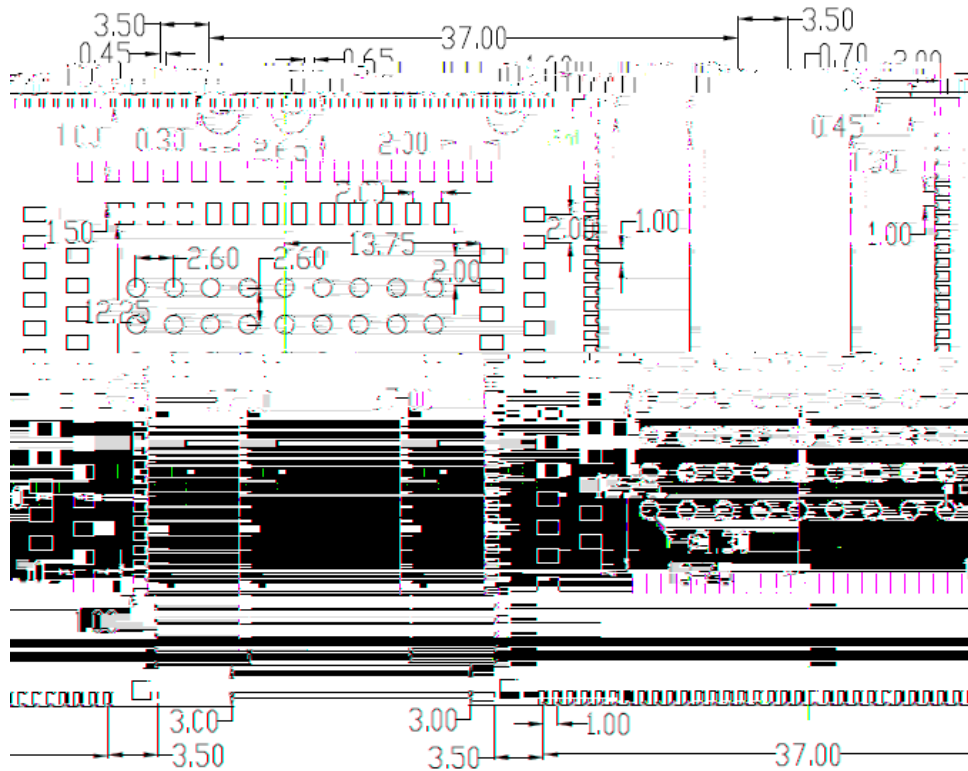
	GND
	GPIO
	POWER
	AUDIO
	PMIC
	MIPI
	RF
	OTHERS
	Reserved

5. 2D

TOP



BOTTOM:



Side:

